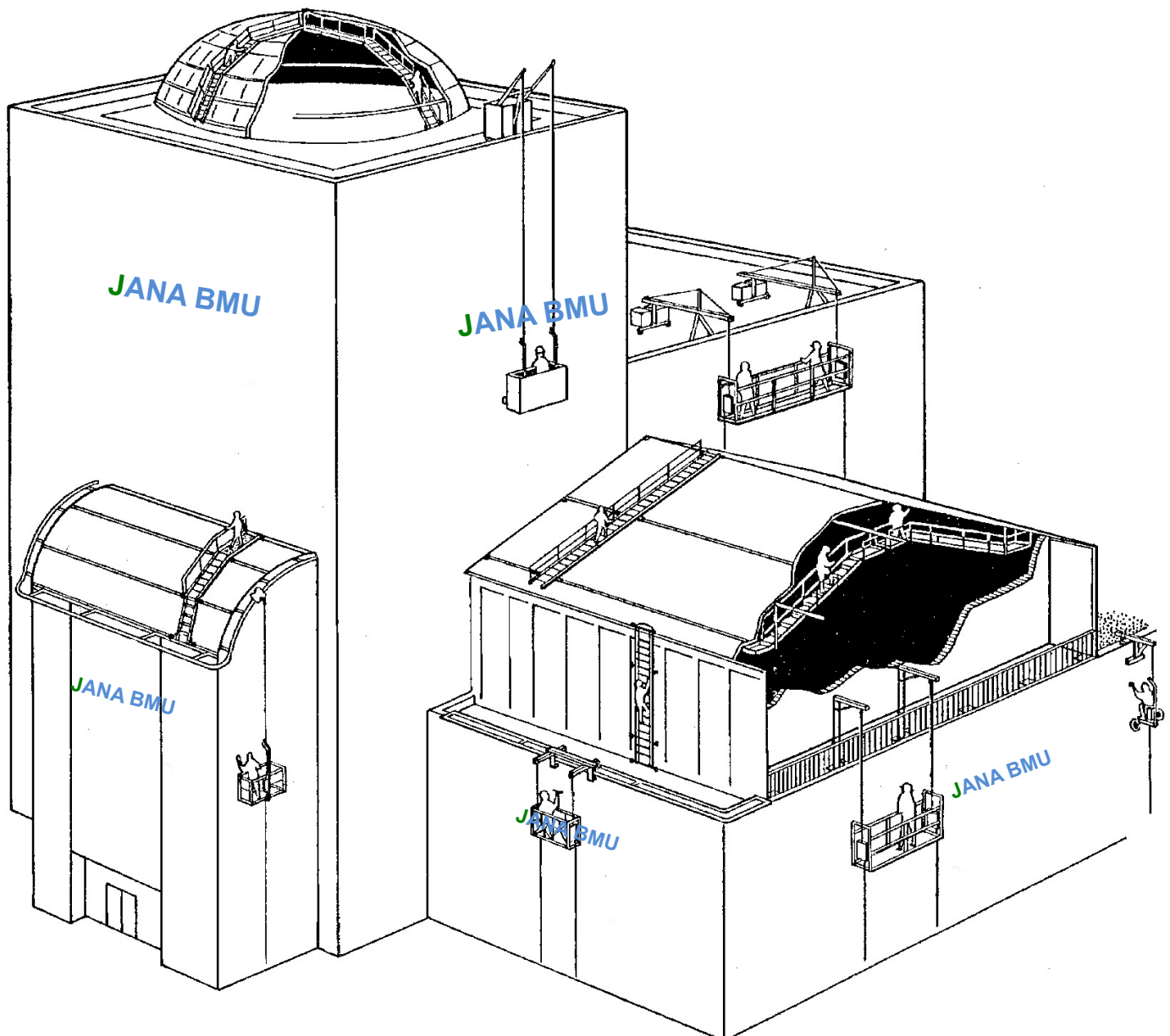




## Company Profile

# JANA BMU

**Buildings Maintenance Units (BMU), Cleaning System, Fall Arrest System.**



***Company Contact:***

**JANA-BMU**

**Building Maintenance Units (BMU), Façade Access & Fall Arrest System**

Head office:

P.O. Box: 2609, Riyadh 11461, Kingdom of Saudi Arabia.

Tel: + 966 11 4032 118 ext. 101

Fax: + 966 11 4032 118 ext. 111

E-mail: [info@jana-bmu.com](mailto:info@jana-bmu.com) - Facebook.com / janabmu

Web site: [www.jana-bmu.com](http://www.jana-bmu.com)

Attn: to Mr. Taisir Hadidi – Executive Manager.

Mobile No. + 966 541 77 22 88

***1. Introduction:***

We are pleased to take this opportunity to introduce our company to your firm as one of the Saudi Companies and our head office is located in Riyadh, KSA. JANA BMU was founded in 2009 for wholesale trade in construction materials and electrical appliances.

Due to the nature of our work in the field of construction, and the demand for cleaning equipment, we opened our specialist department for cleaning and maintenance equipment.

Today JANA-BMU is a sole proprietorship for several European companies, JANA-BMU is currently working closely with suppliers to create a worldwide access system company, capable of providing a designated access solution to accompany today's architectural challenges.

We at JANA-BMU are specialized in engineering systems, that is committed to provide workers with safe access to work areas, where fall hazards and building maintenance are needed, based on the highest level and standards undertaken by the European Community.

We can use our expertise to provide the best cost-effective solutions, supply, and install the required machinery in addition to after sales services and availability of spare parts.

We use our expertise to ensure you receive excellence and we adhere to industry standards such as:

- EN 1808 (Europe): Include 19 European Standards of which: BS 6037 (UK), TRA 900 (GER), DTU 95.1 (FRA), etc.
- OSHA 1910.66 (USA)
- APAVE (France), TÜV (Germany), LIFTINSTITIUT (Netherlands), AENOR (Spain), DEPT. OF LABOR (New York City).

***2. Area Of Activities***

- Consultation during design phase to architects.
- Definition of concept solutions.
- Designing of specification system.
- Manufacturing.
- Installation.
- Maintenance.
- Spare parts supply.
- On site technical supervising.

***3. Safety***

Safety is a prime issue at JANA-BMU

- As a result, we will not delete any safety features due to a budget requirement.
- All our equipment's are under the standards EN 1808.

#### ***4. Training Certificates:***

- Our team is fully credentialed and accredited in the products we offer.


#### ***5. Products:***

- BMU's & Roof Cars.
- Aluminum Monorail System and Climbing Monorail system.
- Temporary & Permanent Platforms.
- Davit Arm System. (Top-Rotating Davits, Floor mounted davit, Parapet mounted davit).
- Travelling Ladders / Gantry System.
- Fall Arrest System (Secure Rope, Secure Rail, Safe Ladder, Sky Walk, Anchor Points).
- Rigging Sleeves & Outriggers.
- Mobile Elevated Work Platform (MEWP) & Spider Work Platform.


#### ***6. Services: (Supply, Installation, Testing and Commissioning).***

- Proposals for all building maintenance units.
- Layout drawing.
- Warranties of cleaning equipment's
- Repair, Maintenance & Annual Maintenance contract for Building Maintenance Units.
- Façade cleaning Services.
- In house training program for cleaning equipment's operator.
- Operation for cleaning equipment's.
- Installation jobs for building maintenance units.


#### ***7. Suppliers / Partners Manufacturers:***


- I.  Atech is the result of the experience it has accumulated thanks to the activity carried out over 35 years by an executive, technical and commercial team that is a leader in the sector of equipment for window cleaning and light maintenance and BMUs.


ATECH is found in more than 40 countries all over the world, ATECH takes a determined stance for a European machinery manufacturer industrial company model, with the ability to design, manufacture and supply large, highly complex permanent equipment (BMU) in any country of the world.

- II.  FallProtec S.A. Luxembourg was founded in 2004. Specialist in Height Safety Products and Safe Access Solutions with more than 25 years of experience in designing, engineering, and manufacturing of Fall arrest system such as, Secure Rope, Secure Rail, Safe Ladder, Anchor points, Skywalk, Safe Access, Rope Climber ...etc.


The complete range of products from FallProtec S.A. is manufactured in accordance with European and US standards, and all products have certifications issued by independent notified bodies.

III.  Sky Climber® (LNX) is the industry leader in designing, manufacturing and distributing suspended access equipment such as quality hoists, rigging solutions, and modular work platforms, monorail system, Davits Arm System, for over 50 years.

IV.  **NORACON BMU SYSTEMS** NorAcon is one of the leading manufacturers of high quality Building Maintenance Systems. The product range spans from lightweight monorail systems to complex traversing ladder, traversing gantry systems. NorAcon can also offer access systems for ships. NorAcon is a Norwegian company and all systems are designed and manufactured in Norway.

V.  With a superior quality product and value, CMC quickly became a world leading aerial lift manufacturer of both truck mounted and self-propelled units.

Today CMC is a world leader in aerial lift technology, it has a wide range of aerial work platform such as Crawlers, truck mounted and Special machines in many customizable versions, providing solutions for all lifting demands.

VI.  Mantall's goal is to provide customers with high quality of aerial work platform such as CMP double & single masts aerial, electric self-propelled scissor lift, super-material lift, self-propelled telescopic booms, self-propelled spider, series truck mounted platforms ...etc. with low cost products, let user work more efficiency and safely in any time and any place.

## **8. Drawing And Studies:**

Our drawing are made by AutoCAD 2010, it is necessary for us to get the building drawing on the same support, to be sure to send back the study into the normal delay which is 3 or 4 weeks It is necessary also to get one shop drawing including:

- ELEVATION
- FINISHED ROOF PLAN (showing chillers, pipes, fans etc.)
- SECTION OF THE BUILDING
- SECTION OF THE PARAPET
- DRAWING SHOWING THE AREA TO BE CLEANED.

More details information (Catalogue, Work By Our Company ...etc.) can be supplied upon requested.

Should you have any question, please do not hesitate to contact me.

Thank you for your business.

Best regards,

Taisir Hadidi  
Executive Manager



ATECH is the result of the experience it has accumulated thanks to the activity carried out over 35 years by an executive, technical and commercial team that is a leader in the sector of equipment for window cleaning and light maintenance and BMUs.

ATECH is found in more than 40 countries all over the world thanks to a consolidated distribution network of companies deeply established in each country, which provide our organization with new ideas, projects and technical challenges every day.

Our technology combines the latest advances in performance, quality and safety, thanks to an organization that manages everything from the calculation and design process to the industrialization, quality control and installation.

When required, our installation technicians supervise the one site assembly of machines and carry out service launch operations in cooperation with our distributors in any country worldwide.

At Atech our goal is produce reliable products, with rigorously designed and manufactured components. We use the most appropriate materials in individual and imaginative solutions that respect architectural projects and which integrate and ensure the correct maintenance of building facades throughout their useful life.

Our accumulated experience totals more than thirty years. We apply our technology to complex projects with large-scale machines throughout the world, in a sector where we are recounted as a leading name in specialized equipment for façade maintenance.

ATECH takes a determined stance for a European machinery manufacturer industrial company model, with the ability to design, manufacture and supply large, highly complex permanent equipment in any country of the world.

At ATECH, the entire design and production processes are managed in our own premises. We control the drawing from proposal to as-built, and the welding, mechanization, thermal treatment, electrical systems, electronic system, assembly, and quality increasing control, are all fulfilled by ourselves too. Also, the increasing standardization of components, and targeted purchase policies, enable us to guarantee the supply of original spare parts during the entire life span of machines.

Considering that ATECH installs almost 300 window washing machines every year in 40 countries, it is obvious that its products have obtained certification from the most outspread and severe controlling agencies. Our machines have satisfactorily fulfilled the most stringent tests by bureaus like TUV in Germany, APAVE, VERITAS and SOCOTEC in France, LIFTINSTITUUT in the Netherlands, AENOR in Spain, New York City's DEPARTMENT OF LABOR, etc.

ATECH presence around the world is permanent. This is obtained either through our own branches, or through our Agent and Distributors network.

Each one of our partners is carefully selected, and ensures the good running of the equipment with a technical department of experienced personnel, trained at our manufacturing premises as well as on site.

## **Sales and Engineering Office:**

Bureau C/ Bruc, 72-74, 4th floor 08009, Barcelona, Spain. Tel: +34 93 411 02 81

## **Factory:**

Camí de les Arenes, 27, 108251 Santpedor Barcelona Spain Tel: +34 938 273 103

---

**JANA-BMU**

**Building Maintenance Units (BMU).**



**Project's reference in KSA.**



**Project Name:** Golf Monetary Council

**BMU Type :** Roof Car

**Location :** Riyadh



**Project Name:** AL Haqbane Project

**BMU Type :** Monorail System

**Location :** Riyadh



**Project Name:** AL - Sobae Building

**BMU Type :** Roof Car

**Location :** Riyadh



**Project Name:** Department of Saudi  
Investment

**BMU Type :** Roof Car

**Location :** Riyadh



**Project Name:** Dimond Tower

**BMU Type :** Roof Car Type A10

**Location :** Riyadh



**Project Name:** Dr. Suliman AL Habib  
Hospital

**BMU Type :** Monorail System

**Location :** Riyadh



**Project Name:** Red Crescent

**BMU Type :** Roof Car

**Location :** Riyadh



**Project Name:** Technical and  
Vocational Training Corporation

**BMU Type :** Monorail System

**Location :** Riyadh



**Project Name:** AL-Mukhmal Plaza

**BMU Type :** Monorail System

**Location :** Jeddah



**Project Name:** Bin Hamran

**BMU Type :** Monorail System

**Location :** Jeddah



**Project Name:** Cigalah Gourp

**BMU Type :** Davit Arm System

**Location :** Jeddah

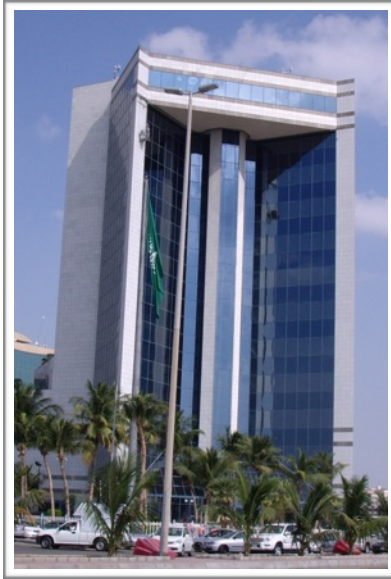


**Project Name:** Crowne Plaza

**BMU Type :** Roof Car Type A10

**Location :** Jeddah

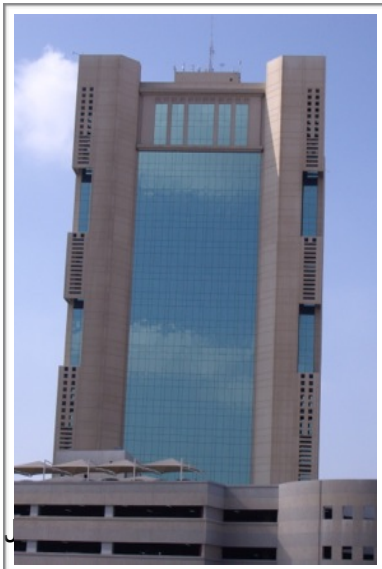




**Project Name:** Jeddah Chamber of Commerce

**BMU Type** : Roof Car Type A10

**Location** : Jeddah



**Project Name:** Jeddah Municipality

**BMU Type** : Roof Car

**Location** : Jeddah



**Project Name:** Jeddah International Buisness Center

**BMU Type** : Roof Car

**Location** : Jeddah



**Project Name : Chamber of Commerce**

**BMU Type : Roof Car**

**Location : Jeddah**



**Project Name: Sitm Center**

**BMU Type : Roof Car**

**Location : Jeddah**



**Project Name : Ministry of Interior**

**BMU Type : Monorail System**

**Location : Jeddah**



**Project Name: International Golden  
Center**

**BMU Type : Roof Car**

**Location : Jeddah**





**Project Name: Saudi Business Center**

**BMU Type : Monorail System**

**Location : Jeddah**



**Project Name : Jeddah Business Cnter**

**BMU Type : Roof Car**

**Location : Jeddah**



**Project Name : AL Hamrani Building**

**BMU Type : Roof Car**

**Location : Jeddah**

---

**JANA-BMU**

**Building Maintenance Units (BMU).**



# **Product's Catalogue**

---

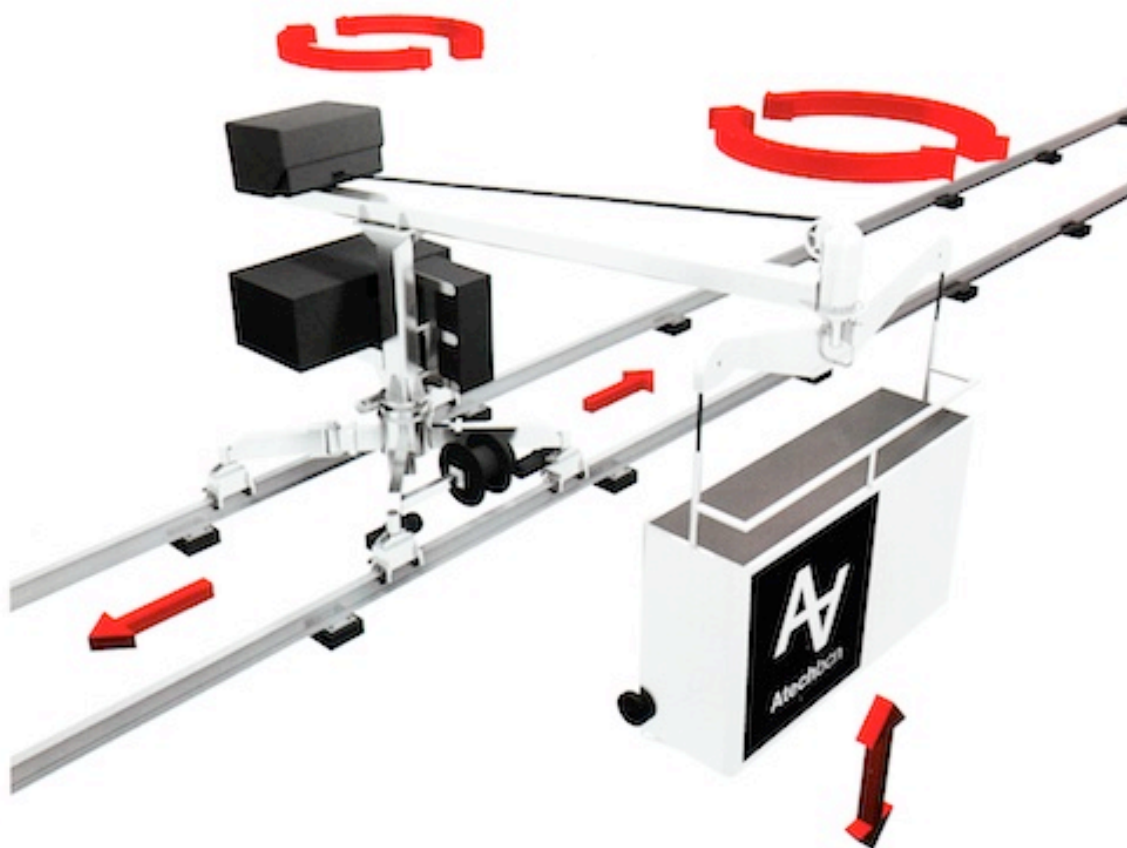
# A1

Básica, ligera y versátil /

Basic, light and versatile /

Base, légère et versatile /

Machine Model



Single jib machines with a slewing system for outreaches of up to 4 meters and a building height of less than 100 meters. Very light machines with excellent features for accessing regular façades.

Góndolas monobrazo con sistema de rotación para alcances de trabajo de hasta 4 m y una altura de edificio inferior a 100 m. Máquinas muy ligeras con prestaciones excelentes de acceso a fachadas regulares.



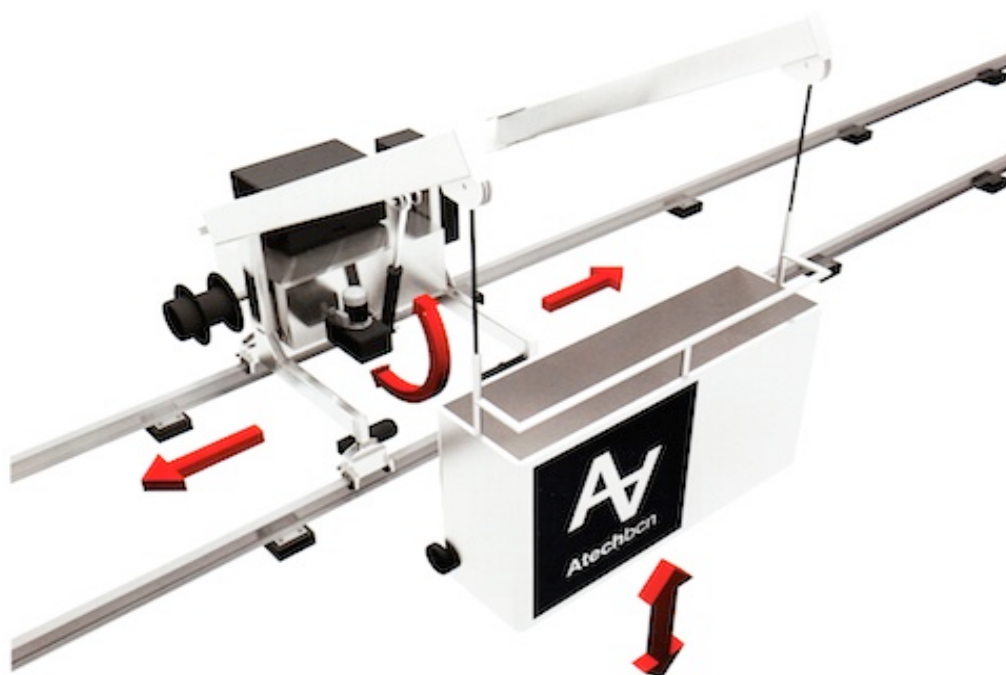
# A10

Machine Model

Un modelo clásico de vigencia actual /

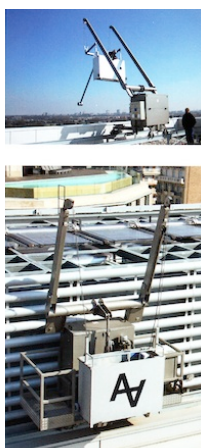
A classic yet contemporary model /

Un modèle classique mais actuel /



Standard equipment with great possibilities to include accessories, such as devices for protecting cornices, auxiliary hoists, large platforms, etc. Horizontal outreaches of up to 4 meters and building height of up to 250 meters.

Equipo estándar con grandes posibilidades de incorporar accesorios tales como dispositivos salvacornisas, polipastos auxiliares, cestas de grandes dimensiones, etc. Alcance horizontal de trabajo de hasta 4 m y altura de edificio de hasta 250 m.





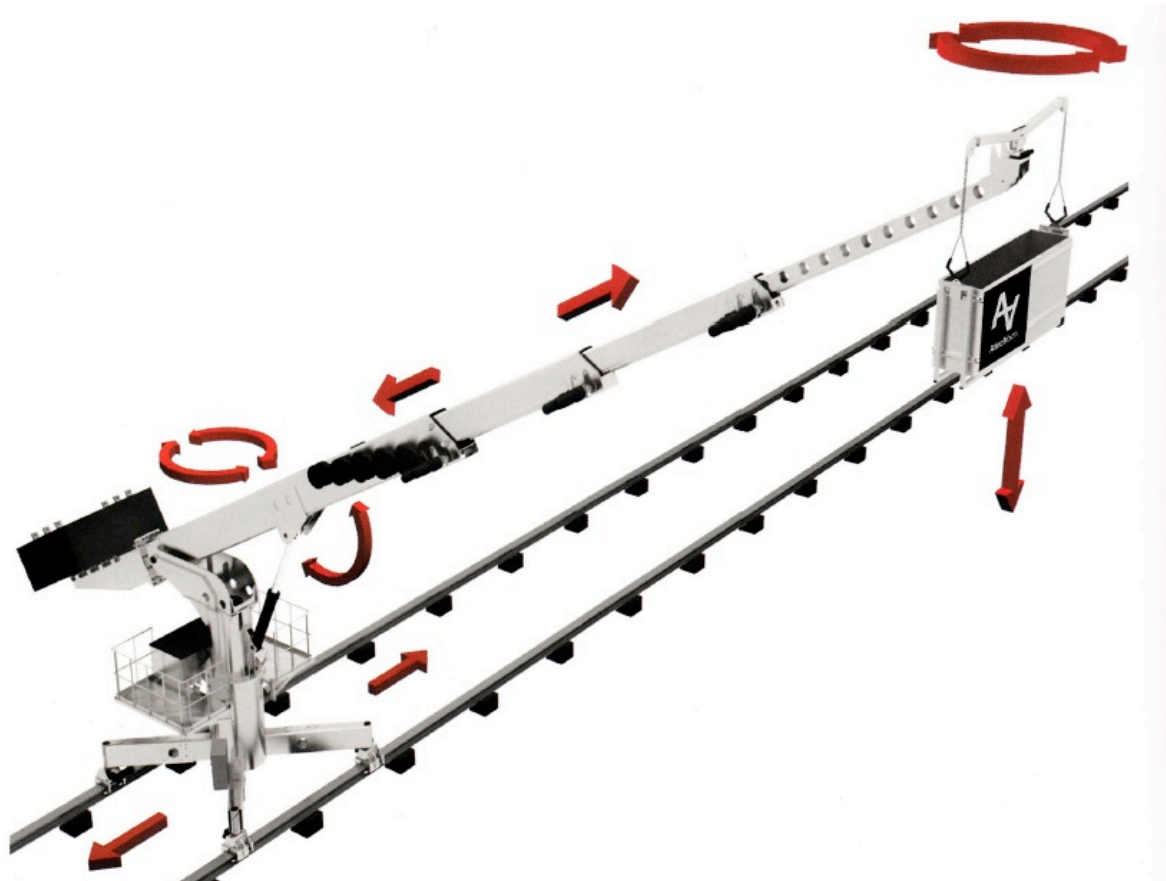
# A15

Machine Model

Todos los beneficios en el mínimo espacio /

All the benefits in minimum working space /

Tous les prestations en un minimum d'espace /



High performance single jib cradles, with slewing jib and spreader bars, luffing and telescopic jibs, horizontal outreaches of up to 20 meters and building height of up to 300 meters, It incorporates any kind of accessory or additional auxiliary load device.

Góndolas monobrazo de grandes prestaciones, con rotación de chasis y cabezal, que permite brazos telescópicos abatibles, alcances horizontales de trabajo de hasta 20 m y alturas de edificio de hasta 300 m. Incorpora cualquier tipo de accesorio o dispositivo adicional de carga auxiliar.



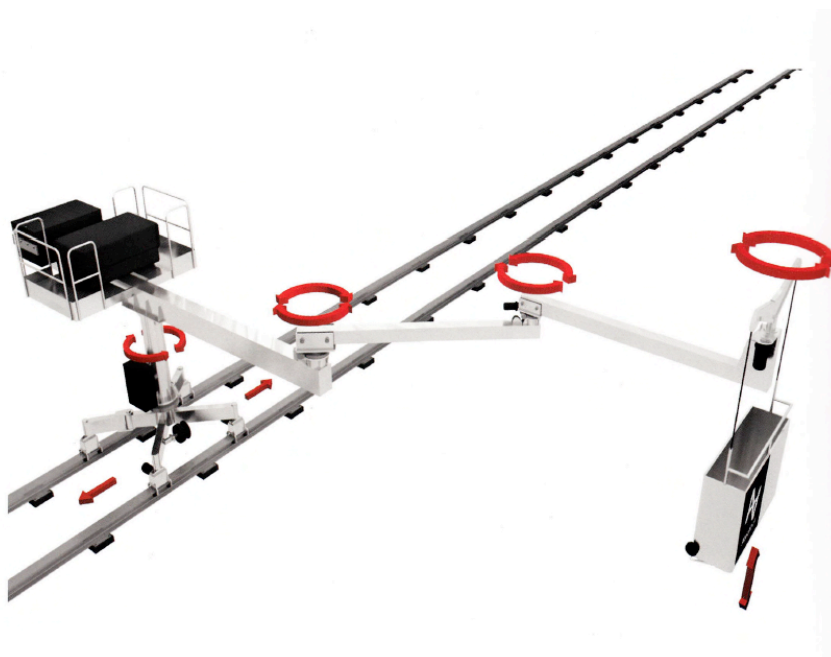
# A18

Machine Model

Básica, ligero y versátil /

Basic, light and versatile/

Base, léger et polyvalent /



Multi- slewing mono- jib equipment of large dimensions, with horizontal working range up to 50 meters and building height of up to 450 meters. Jibs and telescopic columns, auxiliary hoist for lifting loads, special cradles, etc. This is a perfect example of a customized solution.

Multi-matanza equipo mono-grúas de grandes dimensiones, con funcionamiento horizontal rango de hasta 50 metros y altura del edificio de hasta 450 metros. Las horcas y columnas telescópicas, cabrestante auxiliar para levantar cargas, cunas especiales, etc.. Este es un ejemplo perfecto de una solución personalizada.



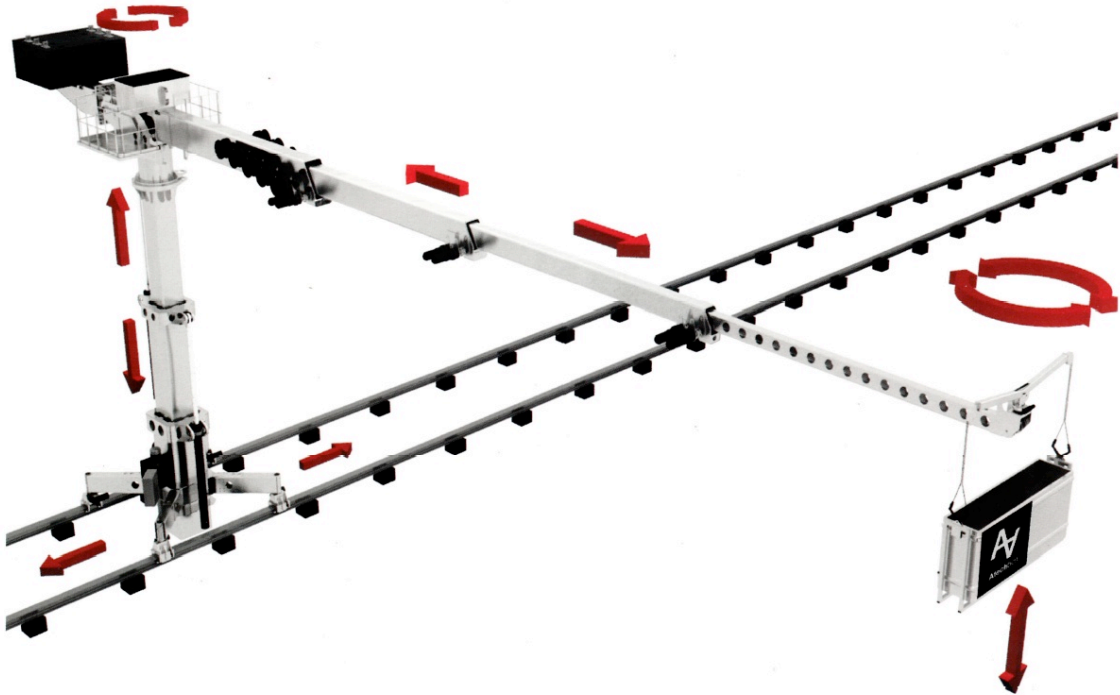
# A25

Machine Model

Tecnología industrial sin límites /

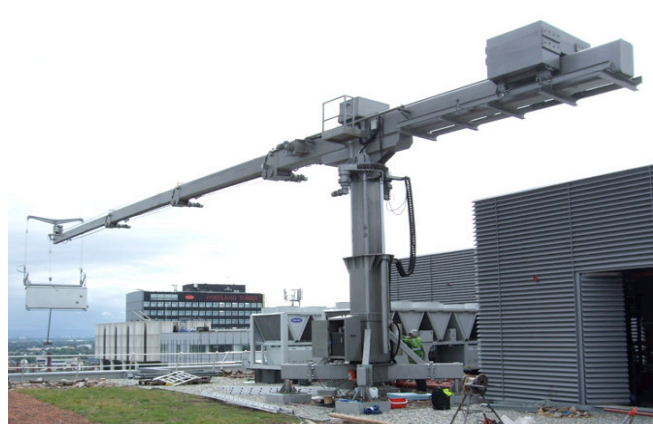
Industrial technology without limits /

Technologie industrielle sans limites /



Single jib machine of large dimensions, with horizontal work scope at up to 50 meters and building height at up to 450 meters. This is the largest machine that ATECH constructs and includes all the technology for reaching façades that we have developed in the projects in which we have participate: Vertical telescopic masts to hide the machine when it is not in use, telescopic jibs of up to 5 stages, special pivoting cradle, auxiliary hoist for raising heavy loads, electronic programming, etc.

Equipo monobrazo de grandes dimensiones con alcance de trabajo horizontal de hasta 50 m y altura de edificio de 450 m. Es la máquina más grande que construye ATECH e incorpora toda la tecnología de acceso a fachadas que hemos desarrollado en los proyectos en los que participamos: fuste telescópico vertical para ocultar la máquina cuando no se encuentra en servicio, brazos telescópicos de hasta 5 tramos, cestas especiales pivotantes, polipasto auxiliar para elevación de grandes cargas, programación electrónica, etc.





## A2

Motorized cradles designed for single monorail tracks fixed to cantilever support brackets that permit the maintenance of façades of buildings in which the design does not allow for installation of roof mounted equipment due to a lack of space or load capacity.

Cunas motorizadas diseñados para pistas de monorraíl único fijan a un voladizo de soportes que permiten el mantenimiento de fachadas de edificios en los que el diseño no permite instalación de techo montado equipos debido a



## A40

Support system for motorised baskets which allows the movement, folding and turning of suspended equipment, so that it can be shared in buildings with roofs at different levels, or with interior spaces which need to be accessed.

Sistema de soporte para cestas motorizadas que permite la traslación, plegable y torneado de equipo suspendido, así puede compartirse en edificios con techos en diferentes niveles, o con espacios interiores que necesitan acceder a.

## A30

System for accessing fan Lights, Large skylights or horizontal, vaulted or sloping glass surface areas, from the interior as well as from the exterior.

They are made of aluminum to be as light as possible. It is possible to suspend motorized cradles or special stairs from them.

Sistema para acceder a ventilador luces, grandes lucernarios o las superficies de cristal abovedado, horizontal o inclinado, desde el interior, así como desde el exterior.

Se hacen del aluminio para ser lo más ligera posible. Es posible suspender motorizados cunas o escaleras especiales de ellos.



## MONORAIL SC -134

The **SKY CLIMBER** aluminum monorail profile **SC-134** is designed for easy mounting on every type of building or structure where a horizontal monorail solution is required. The **SKY CLIMBER SC-134** profile can be mounted with a topside or top-mounting bracket.

**Top side mounting brackets**



**Top mounting brackets**



The **SC-ET1** trolley is an electrical trolley designed for the **SKY CLIMBER** Monorail Track **SC-134** and can be used as carrier for **SKY CLIMBER** suspended platforms, allowing these to travel sideways under the **SC-134** track.

In combination with single or double suspension trolleys and our **SKY PI/BMU** Cradles, the **SKY CLIMBER** Monorail System will provide you a safe and cost effective permanent solution for all your access or maintenance problems.

**Single hoist SKY PI**

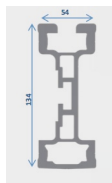


**Double hoist SKY PI**



### Monorail profile SC-134:

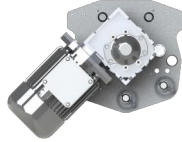
- Ref. nr. : 01301320
- Weight: 5,981 kg/m
- Height: 134 mm
- Width: 54 mm



## POSSIBLE TROLLEY COMBINATIONS:

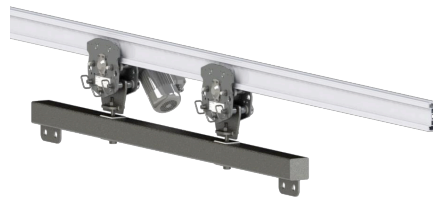
For suspended platforms with one suspension point only 1 electrical trolley is needed. For suspended platform with two suspension points 2 trolleys are needed, however it's possible to use one electrical trolley in combination with one manual (slave) trolley.

### ➤ SC-134 Monorail profile with 1 electrical trolley



Electrical Trolley SC-ET1

### ➤ SC-134 Monorail profile with 1 electrical, 1 slave trolley and spreader bar



### ➤ SC-134 Monorail profile with 2 electrical trolleys and connection rod



The SC-ET1 electrical trolley moves with a maximum traversing speed of 18m/min\* along the monorail track and is equipped with an engine and a gearbox. The electrical trolley is self-locking which will prevent unwanted movement along the track. This will also prevent that the trolley will slide along the track in case of a power failure.

The SC-ET1 trolley has a unique traction system. All 4 wheels of the SC-ET1 trolley are driven to assure traction on the monorail track in all conditions.

## Electrical Monorail Trolley SC-ET1 :

1= Suspension rope attach point  
(max. Work Load Limit of hoists: 400 kg)

2 or 3 = Secondary rope attach point

- Working Load Limit (WLL) 4000N (400 kg)
- Self-weight 235N (23,5 kg)
- Wire rope 8,4 mm
- Horizontal speed trolley \* 9 m/min (18m/min upon request)
- Power 400V (3ph)
- Length x width x height (mm) 422x352x328 mm
- Electrical engine 0,37 kW – rpm 1350/53
- Safety against rolling out of track End stops on track
- Safety against falling of track Fall protection studs
- Maintenance Annual maintenance
- Spare Parts Only use SKY CLIMBER original parts

CC - ET1 Trolley 400 V 50 Hz 3 ph

Serial nr. \_\_\_\_\_ Speed : 0,15 m/s

MFG date: \_\_\_\_\_ WLL : 400 Kg

N.V. Sky Climber Europe S.A. Nieuwheidstraat 23 2570 Duffel, Belgium

↓ Suspension Rope attach point

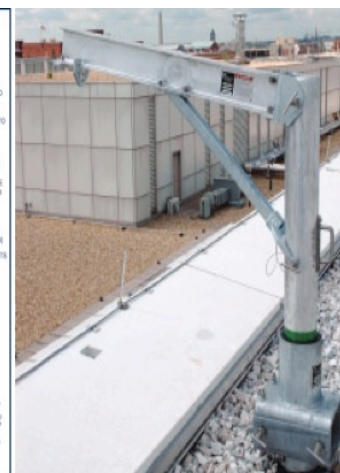
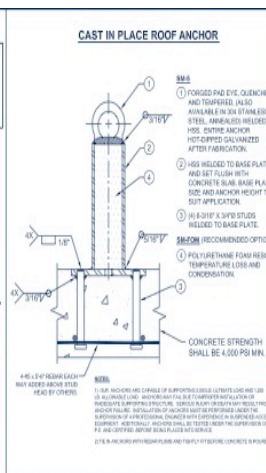
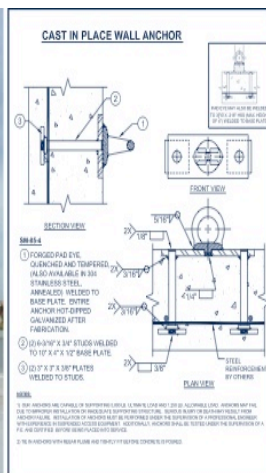
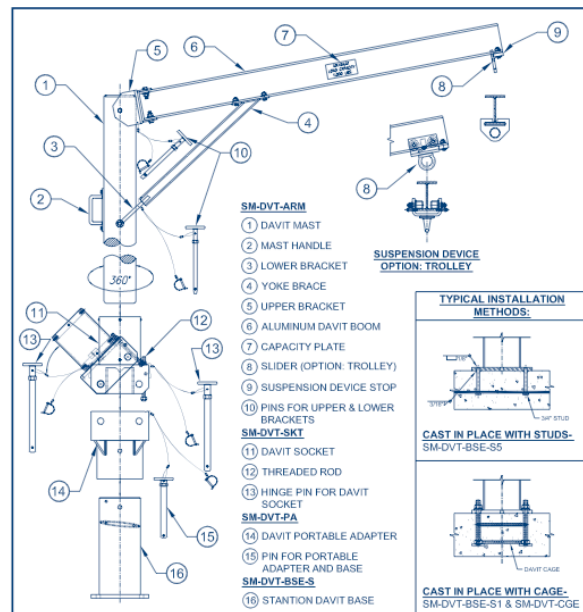
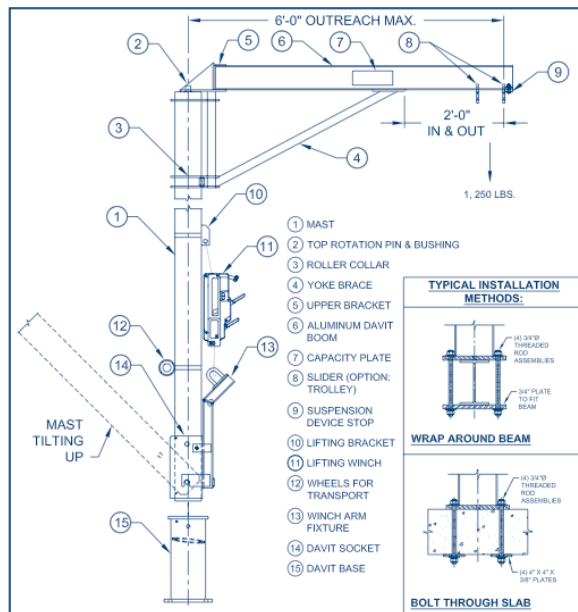
SC Trolley Nameplate

# Permanent Installation

## Davits - Sockets - Anchors

**Top Rotating Davits:** Enable workers to initially rig and board a powered platform on the roof, which will then be launched outboard over the parapet and suspended along the building face. Horizontal clearance is required for the davits to rest on the deck during set-up and dismantling.

**Roof- Rigged Davits:** Provide an anchorage point for suspending a platform originating on a lower level ( e.g. sidewalk or street below. They only have to be tall enough for the boom to clear the parapet, making them easier to handle and erect than roof-rigged (top rotating) davits





## 1. TRAVERSING GANTRY SYSTEM



### Gantry

The Traversing gantries are often used for access to straight, inclined, or curved internal glass roofs. They will provide safe and easy access for cleaning and maintenance. The gantries can have different width, length, and height. You can have extendable end piece or maybe include a tower to be raised in certain positions. Most designs are possible.

Material:	Aluminum
Rated Load	1- 3 men (120 -360 kg)
Weight	25-30 kg per meter
Dimensions	According to spec.
Movement	Manual, rope driven or electric
Horizontal Movement	Yes
Vertical Movement	No
Sloped monorail	Yes, together with Nolift
Applications	If you install a monorail underneath, you could suspend a suspended platform, which will give you access to the whole atrium.

## 2. TRAVERSING LADDER SYSTEM



### Ladder

The Traversing ladders are often used for access to straight, inclined, or curved glass roofs or façades; they will provide safe and easy access for cleaning and maintenance. This means that the ladders can follow the shape of the most of structures.

Material:	Aluminum
Rated Load	1- 2 men (120 -240 kg)
Weight	Depended on design
Dimensions	According to spec.
Movement	Manual, rope driven or electric
Horizontal Movement	Yes
Vertical Movement	No
Sloped monorail	Yes, together with Nolift

## 3. TRAVERSING BOX-LADDER SYSTEM

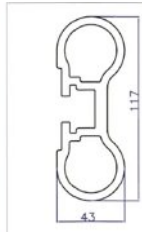
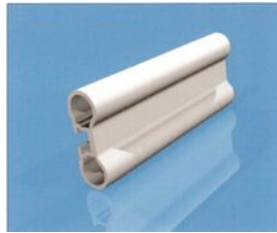


### Box Ladder

The Traversing box ladders are often used for access to glass facades where the ordinary ladder is not sufficient. The box ladder provides a completely stabile and protected working platform. The user is protected on all asides. For building exposed to high winds, or if there are public access areas underneath that cannot be cordoned of, the box ladder is a good alternative.

Material:	Aluminum
Rated Load	1- 4 men (120 -480 kg)
Weight	28 kg per meter
Dimensions	According to spec.
Movement	Manual, rope driven or electric
Horizontal Movement	Yes
Vertical Movement	No
Sloped monorail	Yes, together with Nolift
Applications	Can be used as carrier for commercial signs.

#### 4. MONORAIL SYSTEMS

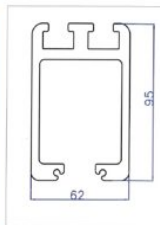


##### NP35

The NP35 monorail system is very popular due to low weight and low price. It can be used as carrier for many different applications like suspended platforms, gantries and ladders. This monorail is for horizontal installations only.

Material:	Aluminum
Distance between brackets (max)	2,4 meter
Horizontal bending	Yes
Vertical bending	No
Twisting	NO
Manual trolley	NP 35R
Rope driven trolley	NP35P
Electrical trolley horizontal movement	NP35E
Installation	Side mounted
Applications	Suspended platform Rope Access Gantries and Ladders

#### 5. TRAVERSING MONORAIL SYSTEM



##### NPO3

The NPO3 monorail system is designed to carry suspended platforms as well as traversing ladders and gantries. The monorail is top mounted allowing it to be hidden inside the roof construction. The NPO3 is lighter than the

NP04 and NP2'1 monorail. This means a lower price, but also less strength to take long spans with high loads. The double bolt gap eliminates sideways movement.

Material:	Aluminum
Distance between brackets (max)	2,4 meter
Horizontal bending	Yes
Vertical bending	No
Twisting	No
Manual trolley	NP 03 M
Rope driven trolley	NP 03 R
Electrical trolley horizontal movement	NP03 E
Climbing trolley (horizontal and vertical movement)	No
Installation	Top mounted
Applications	Suspended platform Rope Access Gantries and Ladders

#### 6. ROOF CAR SYSTEM



The roof car is running on 2 parallel monorails installed on brackets. The front monorail must be Np01 aluminum monorail, but the rear monorail can be any suitable monorail (like NPO1, Np35 or steel tube if preferred). The choice of rear track is subject to load

##### RTO1 E

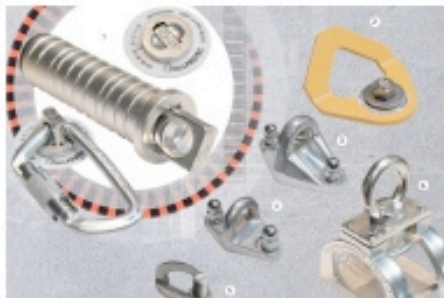
The roof car is operating on top of the roof. It has a retractable jib than can carry a suspended platform. It is possible to connect 2 roof cars in order to carry one suspended platform with 2 suspension points. The monorails are hidden behind parapet. The jib is extended when in use. The roof car can also be used for sloping monorails.

Material:	Aluminum
Rated Load	600 kg
Weight	70 kg
Dimensions	813x650x184 mm
Movement	Electrical
Horizontal Movement	Yes
Vertical Movement	No
Sloped monorail max 15degrees	Yes, together with Nolift trolley
Applications	Suspended platform, Rope Access



### SECUROPE life line components.

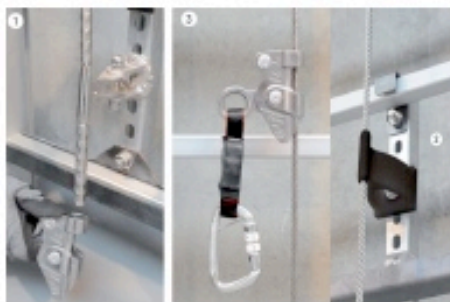
- A. End anchor fitted with turnbuckle.
- B. Intermediate anchor.
- C. End anchor fitted with an energy absorber.
- D. Curve formed between 2 intermediate anchors
- E. Glider fitted with safety lock
- F. SECUROPE may be installed on ground or wall or ceiling configurations.



### 1-2-3-4-5

Anchor devices designed to be fixed on vertical, horizontal or inclined surface.

6. Anchor device designed to be mounted in combination with a fixing assembly for cold deck or standing seam roof.



### SECUROPE Vertical EN 353-2

Vertical Securope, guided type fall arrester including a stainless steel wire rope.

- 1. Top and bottom anchors
- 2. Intermediate anchors in plastic
- 3. Fall arrester



### SECURAIL Horizontal EN 795 class D

- A. SECURAIL on a cold deck.
- B. Trolley VIA 1 for ground configuration.
- C. Trolley VIA 5 for wall configuration.



### SECURAIL Vertical EN 353-1

- D. SECURAIL fitted with rungs to form a ladder.
- E. Fall arrest trolley VIA 4 with automatic locking





## SAFE ACCESS EN 795 class D

Safe access rigid anchor line fitted with NAV 2 trolley and retractable block.

Distance between brackets: 6 m.

Number of users: 3.



## SKYWALK EN 795 Class E

Skywalk dead weight anchor device which relies solely on mass and friction without any penetration in the roof waterproofing.



## TELESCOPIC SAFELADDER



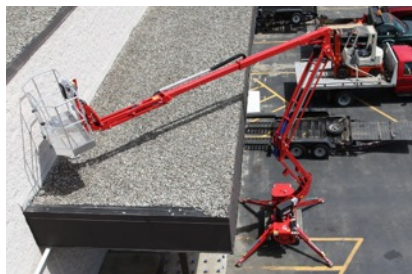
## SAFELADDER ACCESSORIES



## TRAVERSING SAFELADDER

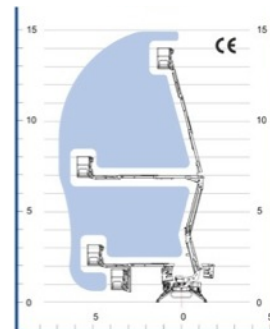
## Building Maintenance Units.

CMC is located in Italy, all CMC products being UNI EN ISO 9001 certified and all CMC products are certified by TÜV SÜD America Inc.



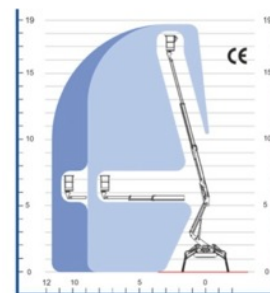
### Type: SUP 15 m.

Max. working height	15 m
Max. lifting height	13 m
Max. working outreach	7 m
Basket size	1,2x0,7x1,1 m
Basket max. load	200 kg
Turret rotation	± 178°
Basket rotation	± 90°
Weight	1800 kg



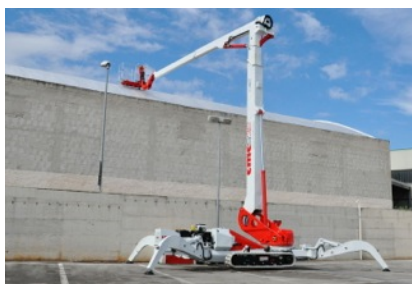
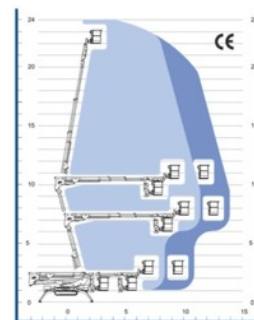
### Type: SUP 19 m.

Max. working height	18,7 m
Max. lifting height	16,7 m
Max. working outreach	11,7 m
Basket size	1,4x0,6x1,1 m
Basket max. load	200 kg
Turret rotation	± 360° (720°)
Basket rotation	± 90°
Weight	2750 kg



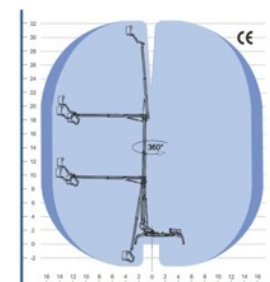
### Type: SUP 24 m.

Max. working height	24 m
Max. lifting height	22 m
Max. working outreach	14 m
Basket size	1,7x0,7x1,1 m
Basket max. load	200 kg
Turret rotation	± 180°
Basket rotation	± 90°
Weight	3960 kg



### Type: SUP 32 m.

Max. working height	32 m
Max. lifting height	30 m
Max. working outreach	16 m
Basket size	1,7x0,7x1,1 m
Basket max. load	200 kg
Turret rotation	± 360° (720°)
Basket rotation	± 90°
Weight	6560 kg



### Type: SUP 41 m.

Max. working height	41 m
Max. lifting height	39 m
Max. working outreach	16 m
Basket size	2x0,8x1,1 m
Basket max. load	200 kg
Turret rotation	± 360° (720°)
Basket rotation	± 90°

